

Making Assets of Liabilities
Stories of redevelopment and community empowerment from
Central Appalachia

Joey James, Downstream Strategies

October 4, 2019



DOWNSTREAM STRATEGIES

- Rural small business
- Founded in 1997
- Small offices around West Virginia but work globally

Our Work:

- Strengthens economies
- Sustains healthy environments
- Builds resilient communities



NOTABLE WORK AREAS

- Source water protection
- Ecological restoration
- Local food systems planning and development
- Litigation support/expert testimony
- Solid waste management
- Economic resilience planning
- Climate change resilience planning
- Brownfield/mine land assessment and reuse
- Community development support
- Economic assessment
- Energy systems research and development
- Policy

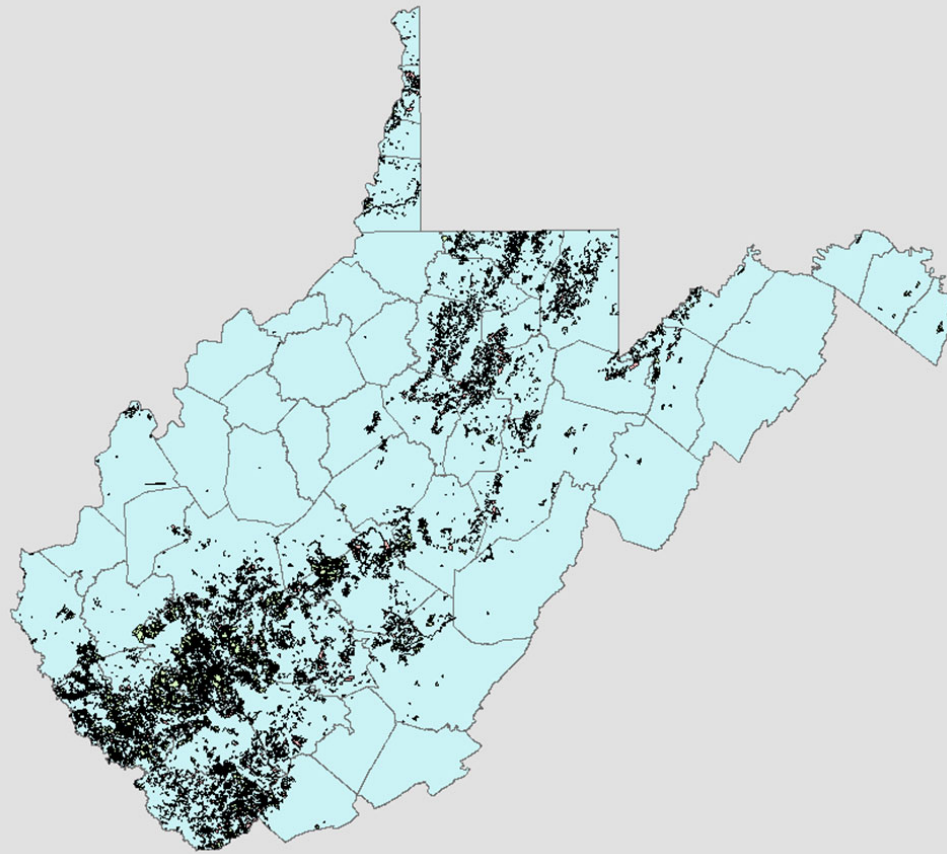


QUANTIFYING THE DECLINE

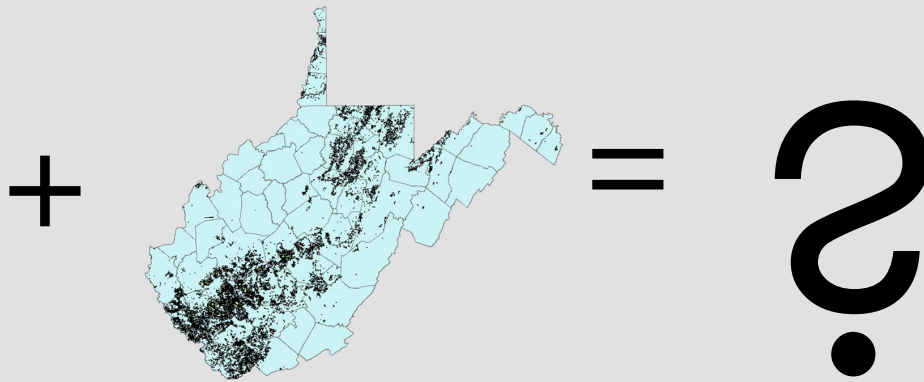
State	Q4 2011	Q42016	Jobs lost	% change	% Total workforce
Kentucky	18,029	6,459	11,570	-64%	0.60%
Virginia	5,439	2,529	2,910	-54%	0.07%
Pennsylvania	8,629	5,238	3,391	-39%	0.06%
Ohio	3,151	1,289	1,862	-59%	0.03%
West Virginia	24,772	12,239	12,533	-51%	1.64%

Source: Houser, Bordoff, and Marsters, 2017

MINED LANDS



State	Q4 2011	Q42016	Jobs lost	% change	% Total workforce
Kentucky	18,029	6,459	11,570	-64%	0.60%
Virginia	5,439	2,529	2,910	-54%	0.07%
Pennsylvania	8,629	5,238	3,391	-39%	0.06%
Ohio	3,151	1,289	1,862	-59%	0.03%
West Virginia	24,772	12,239	12,533	-51%	1.64%



Background: USFWS Southeast Region

A RESTORATION ECONOMY

- Time to capitalize on greater public interest in mine reclamation/redevelopment
- Public and private investment from near and afar
- Need for WELL-PLANNED economic development

Liability



Asset

A RESTORATION ECONOMY

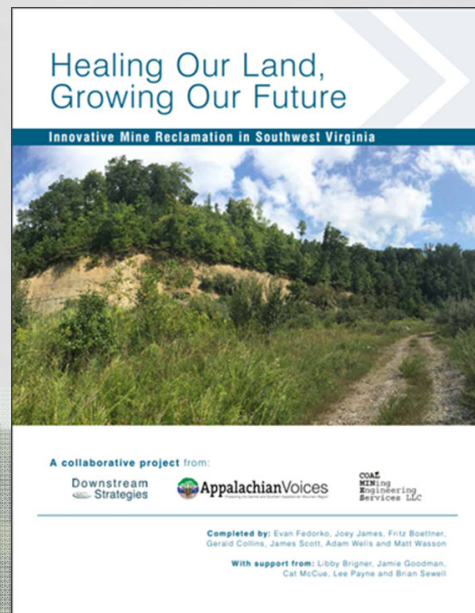
Refers to economic growth that's based on repurposing, renewing, and reconnecting the NATURAL, BUILT, and SOCIOECONOMIC environments.

WOAH!



A RESTORATION ECONOMY

- Healing Our Land, Growing Our Future
- Many Voices, Many Solutions, Innovative Mine Reclamation in Central Appalachia



TODAY'S BUZZ WORD: INNOVATIVE

adjective

(of a product, idea, etc.) featuring new methods; advanced and original.

The Six Guiding Principles of Innovative Reclamation

1. Go above and beyond legal/minimum reclamation requirements
2. Place appropriate end-use
3. Inclusive of multiple community stakeholders
4. Environmental sustainability
5. Financially viable beyond grants
6. Activity should be replicable across region



QUICK TERM REVIEW

AML – Abandoned mine land ((pre-law/pre-~1977))

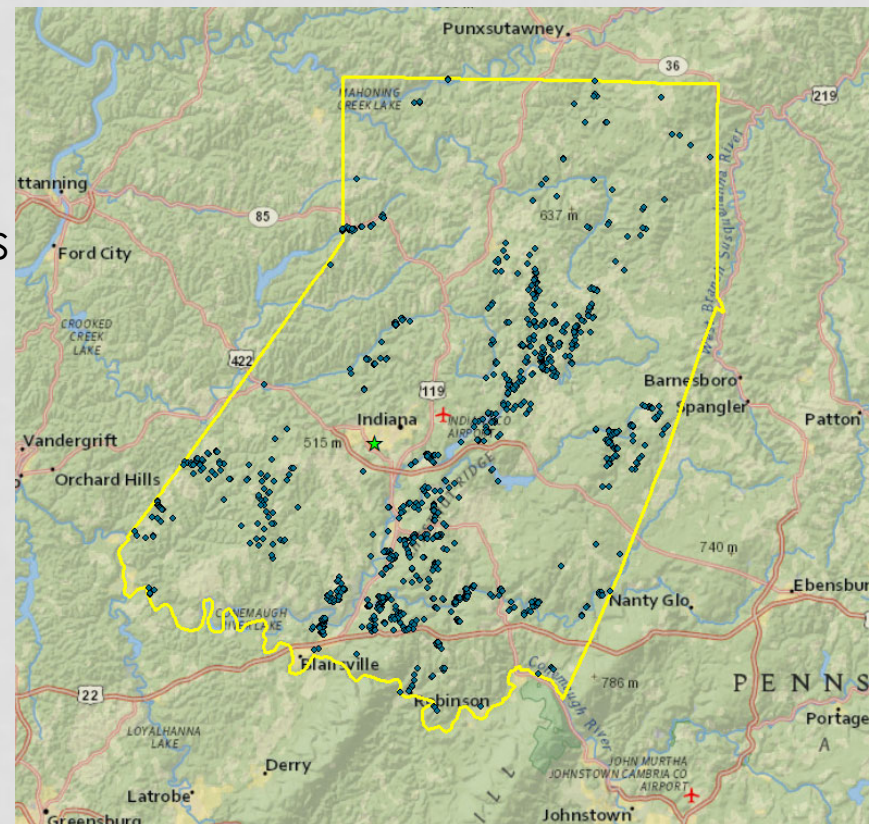
AML Fund- Money collected through reclamation fee assessed on each ton of coal that is produced that is used to fund reclamation of pre-1977 mining features and UMWA Health and Retirement Fund.

AML Pilot – Since 2016, Congressionally appropriated economic development fund for projects on or adjacent to AML sites. (25M to WV, PA, KY; 10M to OH, AL, VA; 3.33M to Navajo, Hopi, and Crow). The Pilot Program is intended to explore and implement strategies to return legacy coal sites to productive uses.



WHAT DOES AN AML LOOK LIKE?

- Clogged streams
- Dangerous highwalls
- Dangerous impoundments
- Dangerous slides
- Hazardous equipment or facilities
- Industrial waste
- Portals
- Subsidence
- Surface burning
- Underground mine fires
- Vertical openings



WHAT DOES AN AML SITE LOOK LIKE?



WHAT DOES A POST-SMCRA MINE LOOK LIKE



WHERE'S THE MONEY?

AML Fund- Money collected through reclamation fee assessed on each ton of coal that is produced that is used to fund reclamation of pre-1977 mining features and UMWA Health and Retirement Fund.

AML Pilot – Since 2016, Congressionally appropriated economic development fund for projects on or adjacent to AML sites. (25M to WV, PA, KY; 10M to OH, AL, VA; 3.33M to Navajo, Hopi, and Crow). The Pilot Program is intended to explore and implement strategies to return legacy coal sites to productive uses.



Background: USFWS Southeast Region

FIRST STOP

Healing Our Land, Growing Our Future

Innovative Mine Reclamation in Southwest Virginia



A collaborative project from:

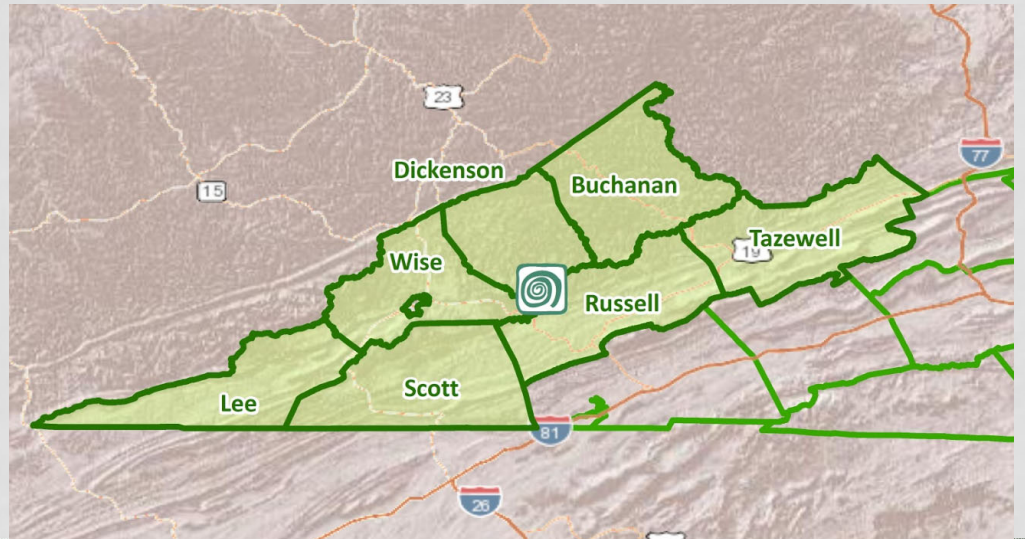
Downstream
Strategies

AppalachianVoices

COAL
MINING
Engineering
Services LLC

Completed by: Evan Fedorko, Joey James, Fritz Boettner,
Gerald Collins, James Scott, Adam Wells and Matt Wasson

With support from: Libby Brigner, Jamie Goodman,
Cat McCue, Lee Payne and Brian Sewell



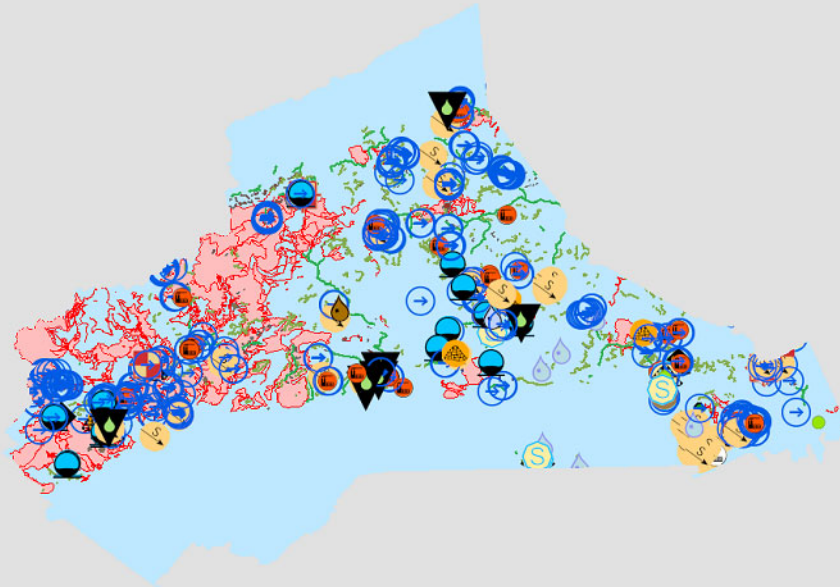
THE RECLAIM ACT

- Expedited release of traditional AML fund for projects with an economic development nexus.
- Money for remediation/economic development seemed imminent
- If money is going to drop, we need to establish a queue of WELL-PLANNED projects



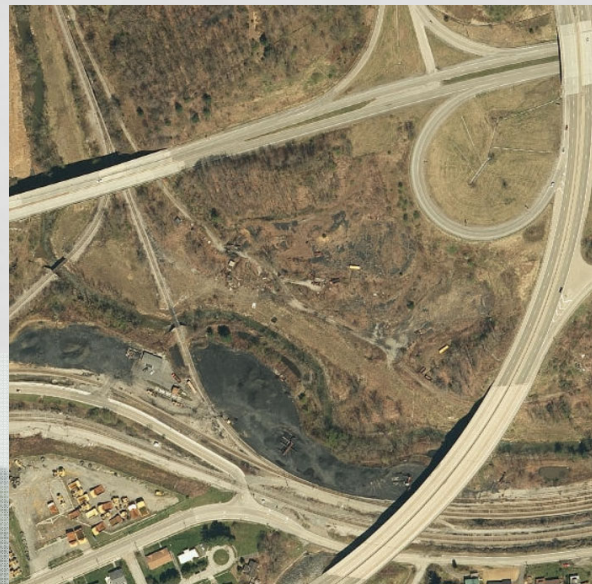
REFINING PROJECT IDENTIFICATION METHODOLOGY

- Let data tell us what AML sites are best for what type of economic development and get community buy-in after.
- Let the community tell us what they want to do and match them with a site.



RESULTS

- Overwhelming interest/ buy-in from the community
- Establishment of quite a few diverse partnerships
- Six recommendations to State and Federal Agencies (details in report)
- 14 projects, ranging from a twinkle in my eye to well-planned and ready for implementation

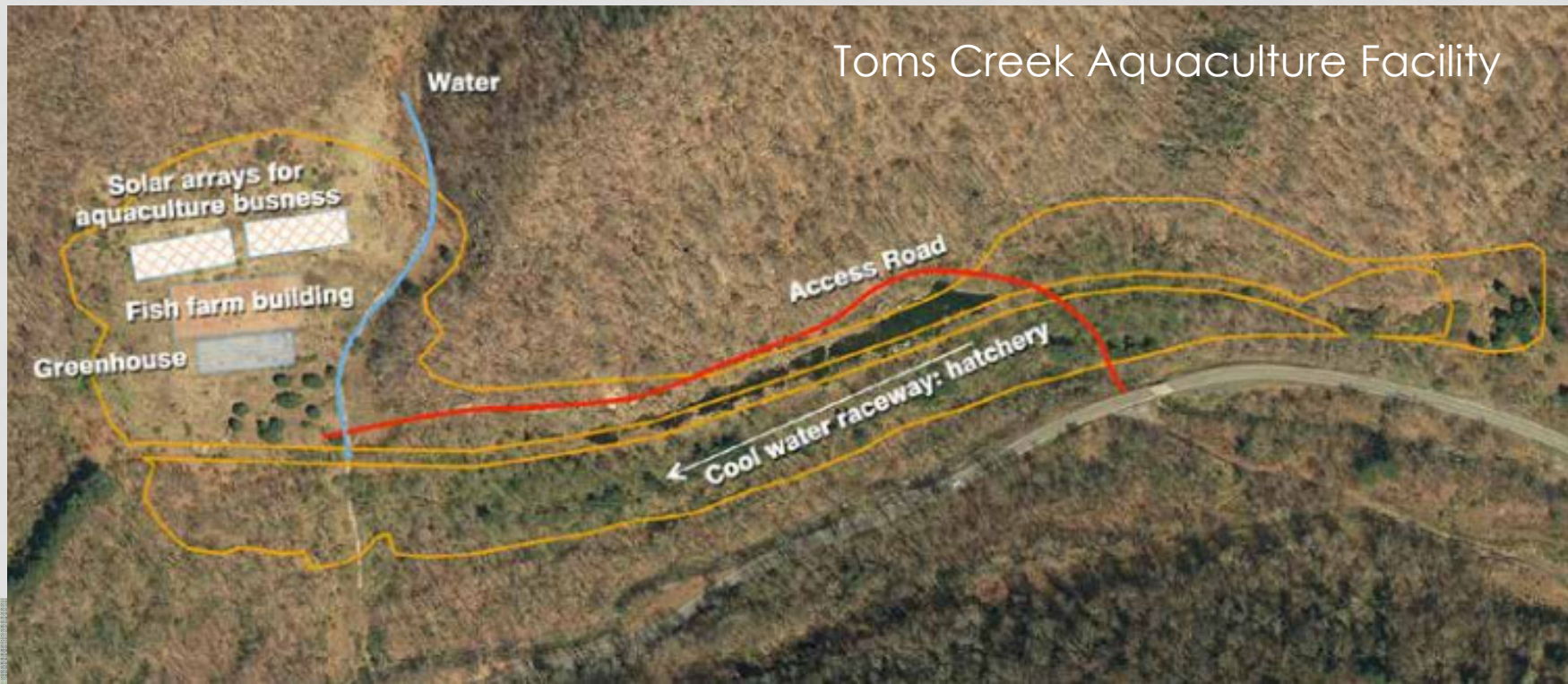


RECLAIM ACT DID NOT PASS





SUCCESS!



Background: USFWS Southeast Region

SUCCESS!



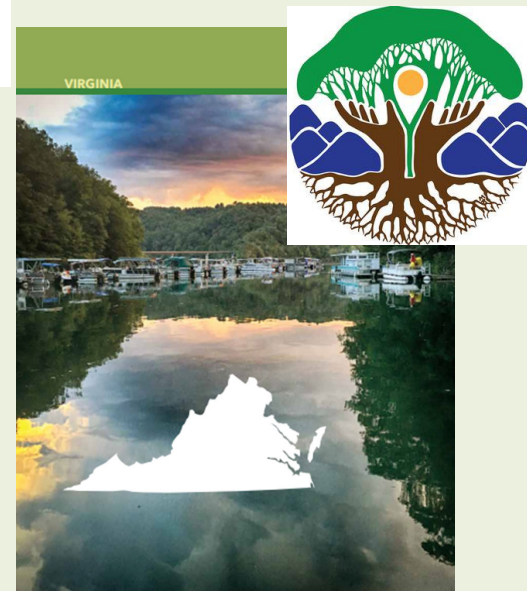
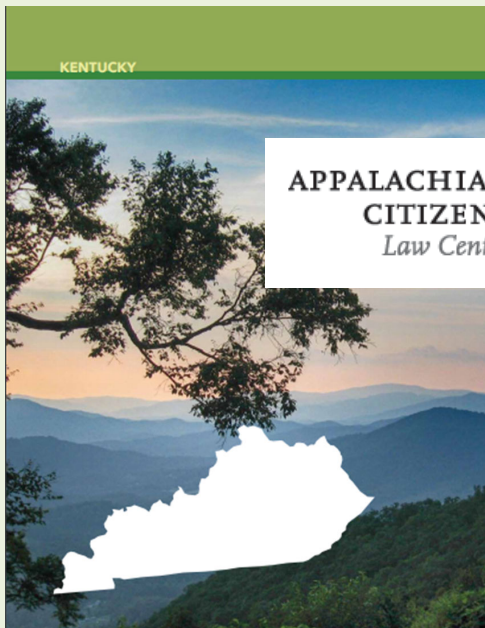
SECOND STOP



**COALFIELD
DEVELOPMENT**
Appalachian COURAGE, CREATIVITY, COMMUNITY



Ideas that sustain.

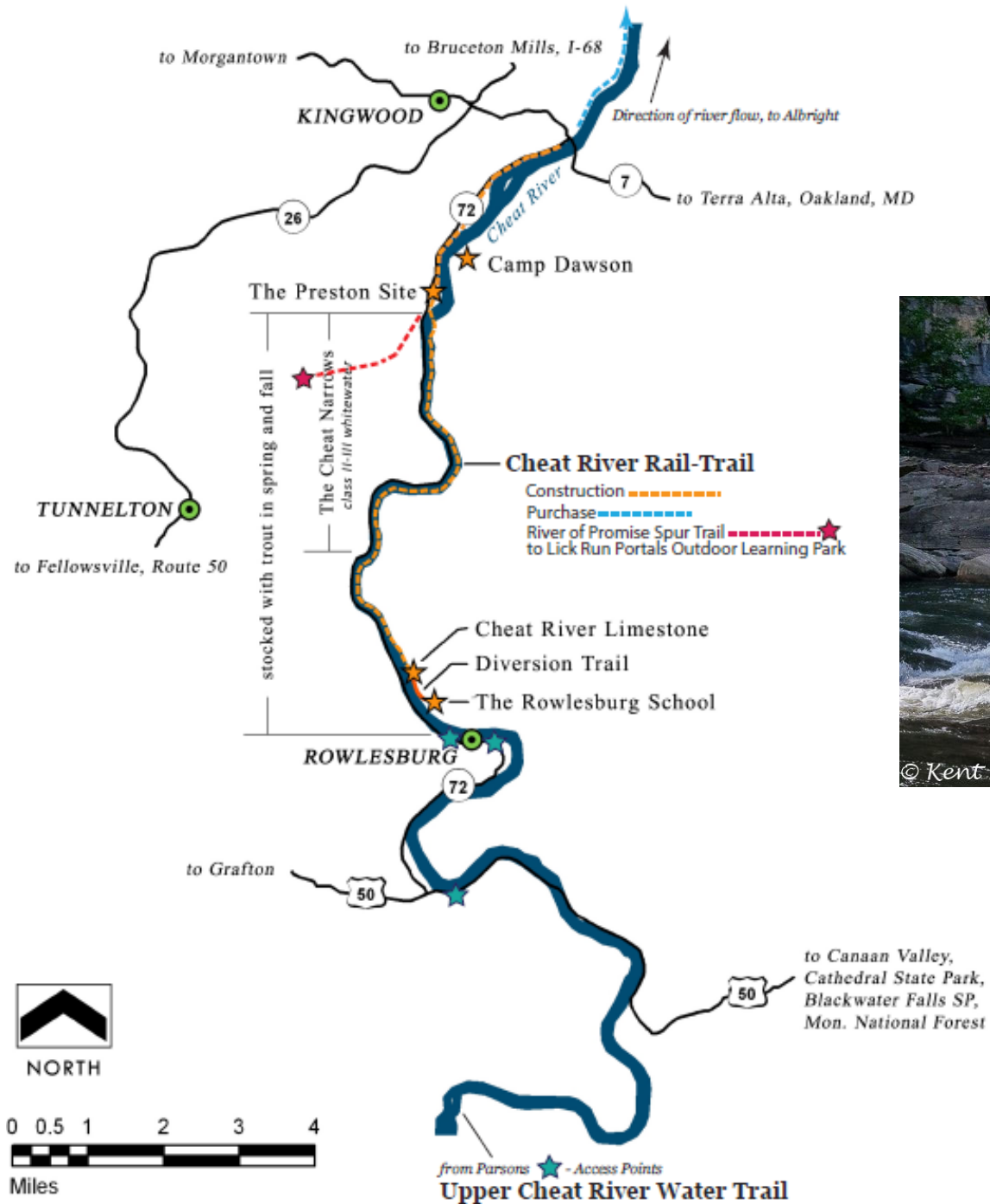


THE GOALS OF THE RAC

- Develop and promote a community of practice around innovative mine reclamation in Central Appalachia
- Promote good projects that will result in sustainable economic growth in evolving sectors
- More reclamation, more jobs



Project Example: Cheat River Rail Trail and AMD Learning Park





Project Example:
**Truetown Paint Pigment
Production Facility**



Rural Action



OHIO
UNIVERSITY



Project Example: Affordable Green Energy Subdivision



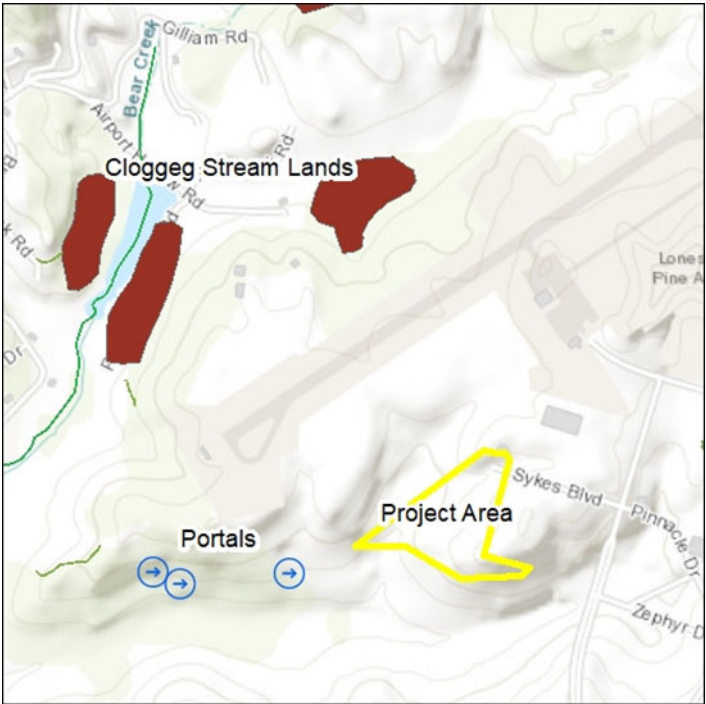
Project Example: Southwest Virginia Solar Springboard



Sun Tribe
SOLAR



MINERAL GAP



LOOKING FORWARD IN 2020

THE NEW YORK
COMMUNITY TRUST



JUST
TRANSITION
FUND

TAKEAWAYS

- Funding streams may change, but the idea of a restoration economy is not going away
- Planning pays off
- It's our duty as people that are knowledgeable about different funding streams to get the word out to community members
- We need to figure out how to best leverage the limited investment we have now
- We need to objectively assess the effectiveness of what we are investing in and intervene where necessary (both within projects and organizations). This is scary for some.

The logo for Downstream Strategies features the company name in a green, sans-serif font. Below the text is a stylized graphic of a river or stream, represented by three curved lines in shades of green and blue.

**Downstream
Strategies**

Ideas that sustain.

Joey James,
Downstream Strategies

304-290-8862

jjames@downstreamstrategies.com

Photo: Michael Shrader